

The Chalet l'Hermitage



View of the chalet l'Hermitage in spring

A magnificent home totalling 460 sq. meters, this fully furnished chalet includes an upper salon with grand piano and satellite TV, a lower salon with fire-place, French billiard table and formal dining area. The house also includes 4 double bedrooms, 3 bathrooms, an eat-in kitchen, party room (carnotzet) and sauna.

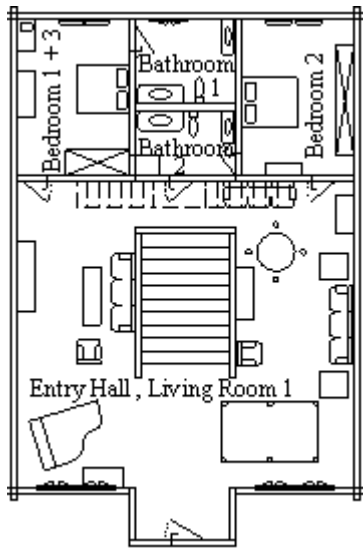
This unique chalet stands at an altitude of 1000 meters in a secluded, peaceful, rural setting with large gardens and 5 terraces offering an absolute silence and intimacy. One has a covered barbecue area with a large table.

Spectacular mountain chains like the Dents due Midi, the Dents Blanches de Champers or the Alps of Vaud and the deep Rhone valley can be seen from the verandas on all sides of the chalet l'Hermitage. Ample parking is available in the front of the main door in the private driveway.

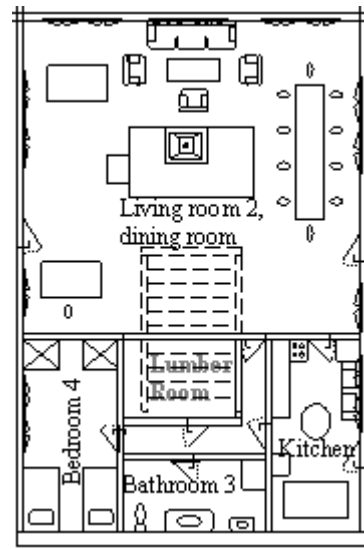
Since the Chalets l'Hermitage, la Bergerie and la Chaumière are close by, all three units can be rented jointly to accommodate larger groups.



Partial view of the living room on the first floor



Map of the first floor



Map of the ground floor