

# The chalet la Chaumière



View of the chalet la Chaumière in summer

This old chalet which has been sympathetically renovated to give all modern conveniences but also ensure preservation of its genuine, antique charm. This is exemplified by the installation of efficient new central heating systems although both apartments still retain their original, working 19<sup>th</sup> century stone stove.

The Chalet la Chaumière is divided into two large and luxurious apartments.

The Chalet la Chaumière stands at an altitude of 1000 meters in a secluded, peaceful, rural setting. The terraces offer an absolute silence and intimacy.

Spectacular mountain peaks like the Dents du Midi, the Dents Blanches de Champéry or the Alps of Vaud and the deep Rhone valley can be seen from all sides. A party room (carnotzet) and a sauna are shared by both apartments.

Since the Chalets la Chaumière, la Bergerie and l'Hermitage are close by, all three units can be rented jointly to accommodate larger groups.



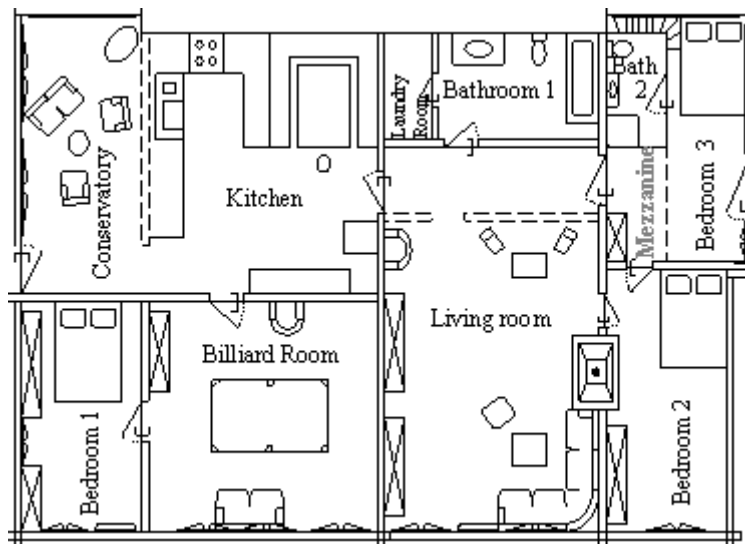
View of the chalet la Chaumière in winter

# The apartment on the ground floor of the chalet la Chaumière



Partial view of the living room

The lower apartment of the Chalet la Chaumière has a living surface of 210 sq. meters. It consists of 3 double bedrooms, 2 bathrooms, eat-in kitchen, billiard room, salon with a fire-place and a magnificent, soaring conservatory which leads directly onto a large terrace with a barbecue-area.



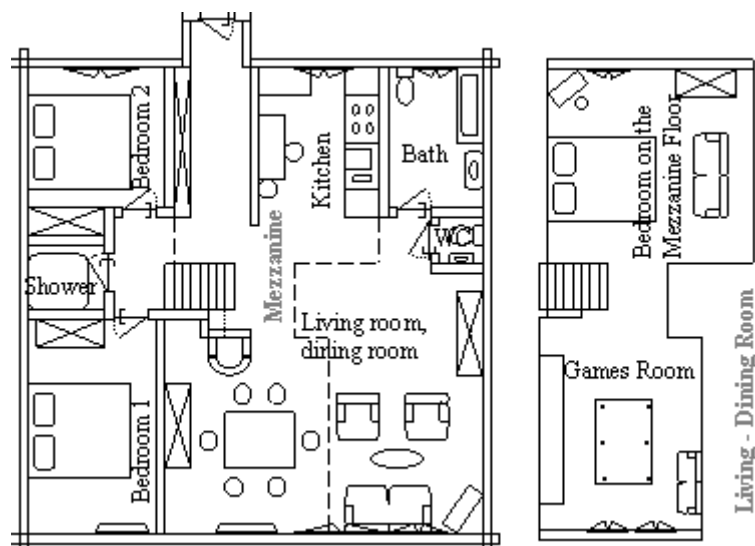
Map of the apartment on the ground floor of the chalet la Chaumière

# The apartment on the first floor of the chalet la Chaumière



Partial view of the living room

The upper apartment of the Chalet la Chaumière has a living surface of 180 sq. meters. It consists of a large, light, open-plan living area with salon, fireplace, formal dining area and kitchen. On this entrance level there is also a full bathroom, a shower room, separate toilet and 2 double bedrooms plus a staircase leading to a further bedroom, a small lounge area and a games room with a pool billiard-table on the open mezzanine floor above. There are two terraces, one having a large, covered area. From the balcony you can enjoy a breath taking view over the Rhone valley and the mountains.



Map of the apartment on the first floor of the chalet la Chaumière