

The chalet la Bergerie



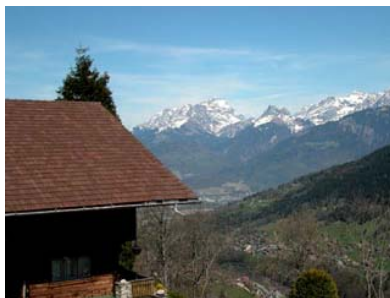
View of the chalet la Bergerie in spring

A magnificent home totalling over 350 sq. meters, this fully furnished chalet includes an upper salon with grand piano, premium stereo equipment, satellite TV and large fire-place. An entertainment room as well as a formal dining room and an Internet corner are located on the ground floor. The house also includes 5 double bedrooms, 3 bathrooms and an eat-in kitchen. For the winter season 2010-2011 a sauna and a rest room will also be available.

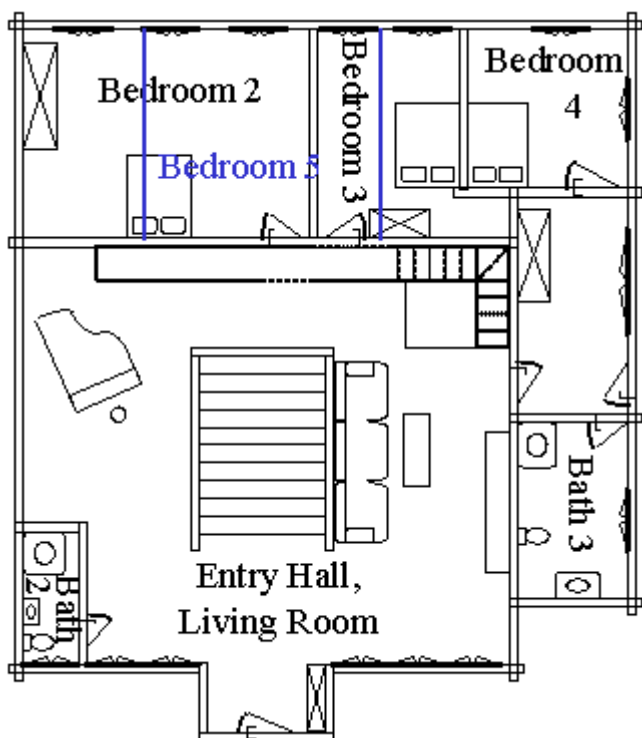
This unique chalet stands at an altitude of 1000 meters in a secluded, peaceful, rural setting with large gardens and 2 terraces offering an absolute silence and intimacy. One has a covered barbecue area with a large table.

Spectacular mountain chains like the Dents du Midi, the Dents Blanches de Champéry or the Alps of Vaud and the deep Rhone valley can be seen from the verandahs on all sides of the chalet la Bergerie. Ample parking is available in the front of the main door in the private driveway.

Since the Chalets la Bergerie, la Chaumière and l'Hermitage are close by, all three units can be rented jointly to accommodate larger groups.



View of the chalet la Bergerie in spring



Map of the first floor



Map of the ground floor