

**We offer the following high standing
accommodation:**

The Chalets

La Bergerie



La Chaumière



And

L'Hermitage



The chalet la Bergerie



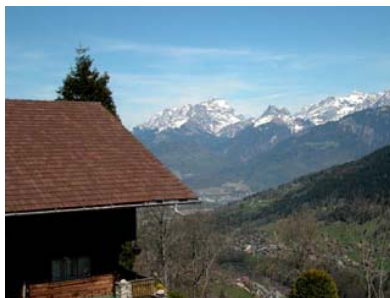
View of the chalet la Bergerie in spring

A magnificent home totalling over 350 sq. meters, this fully furnished chalet includes an upper salon with grand piano, premium stereo equipment, satellite TV and large fire-place. An entertainment room as well as a formal dining room and an Internet corner are located on the ground floor. The house also includes 5 double bedrooms, 3 bathrooms and an eat-in kitchen. For the winter season 2010-2011 a sauna and a rest room will also be available.

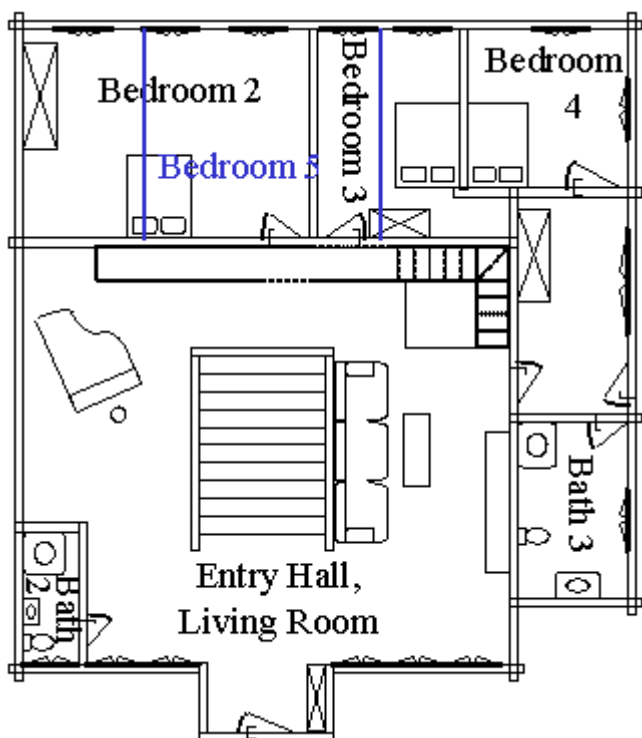
This unique chalet stands at an altitude of 1000 meters in a secluded, peaceful, rural setting with large gardens and 2 terraces offering an absolute silence and intimacy. One has a covered barbecue area with a large table.

Spectacular mountain chains like the Dents du Midi, the Dents Blanches de Champéry or the Alps of Vaud and the deep Rhone valley can be seen from the verandahs on all sides of the chalet la Bergerie. Ample parking is available in the front of the main door in the private driveway.

Since the Chalets la Bergerie, la Chaumière and l'Hermitage are close by, all three units can be rented jointly to accommodate larger groups.



View of the chalet la Bergerie in spring



Map of the first floor



Map of the ground floor

The chalet la Chaumière



View of the chalet la Chaumière in summer

This old chalet which has been sympathetically renovated to give all modern conveniences but also ensure preservation of its genuine, antique charm. This is exemplified by the installation of efficient new central heating systems although both apartments still retain their original, working 19th century stone stove.

The Chalet la Chaumière is divided into two large and luxurious apartments.

The Chalet la Chaumière stands at an altitude of 1000 meters in a secluded, peaceful, rural setting. The terraces offer an absolute silence and intimacy.

Spectacular mountain peaks like the Dents du Midi, the Dents Blanches de Champéry or the Alps of Vaud and the deep Rhone valley can be seen from all sides. A party room (carnotzet) and a sauna are shared by both apartments.

Since the Chalets la Chaumière, la Bergerie and l'Hermitage are close by, all three units can be rented jointly to accommodate larger groups.



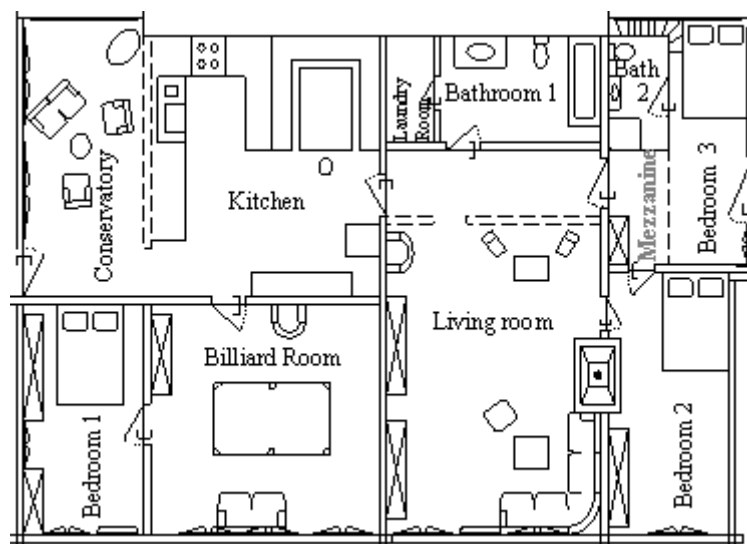
View of the chalet la Chaumière in winter

The apartment on the ground floor of the chalet la Chaumière



Partial view of the living room

The lower apartment of the Chalet la Chaumière has a living surface of 210 sq. meters. It consists of 3 double bedrooms, 2 bathrooms, eat-in kitchen, billiard room, salon with a fire-place and a magnificent, soaring conservatory which leads directly onto a large terrace with a barbecue-area.



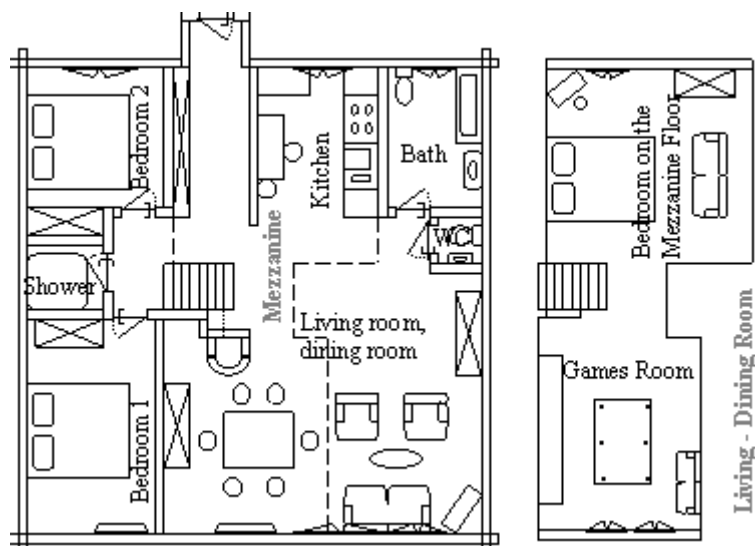
Map of the apartment on the ground floor of the chalet la Chaumière

The apartment on the first floor of the chalet la Chaumière



Partial view of the living room

The upper apartment of the Chalet la Chaumière has a living surface of 180 sq. meters. It consists of a large, light, open-plan living area with salon, fireplace, formal dining area and kitchen. On this entrance level there is also a full bathroom, a shower room, separate toilet and 2 double bedrooms plus a staircase leading to a further bedroom, a small lounge area and a games room with a pool billiard-table on the open mezzanine floor above. There are two terraces, one having a large, covered area. From the balcony you can enjoy a breath taking view over the Rhone valley and the mountains.



Map of the apartment on the first floor of the chalet la Chaumière

The Chalet l'Hermitage



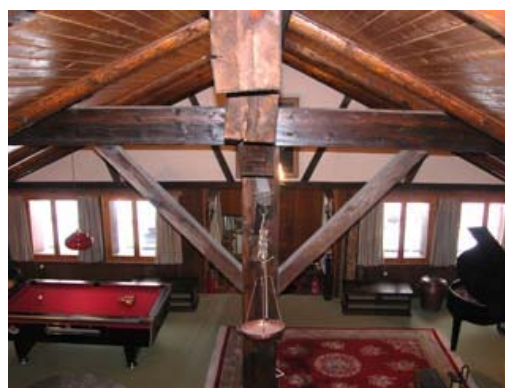
View of the chalet l'Hermitage in spring

A magnificent home totalling 460 sq. meters, this fully furnished chalet includes an upper salon with grand piano and satellite TV, a lower salon with fire-place, French billiard table and formal dining area. The house also includes 4 double bedrooms, 3 bathrooms, an eat-in kitchen, party room (carnotzet) and sauna.

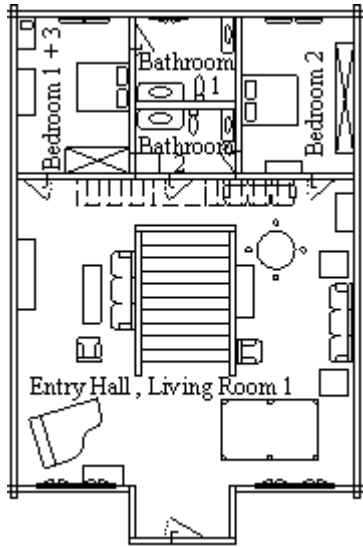
This unique chalet stands at an altitude of 1000 meters in a secluded, peaceful, rural setting with large gardens and 5 terraces offering an absolute silence and intimacy. One has a covered barbecue area with a large table.

Spectacular mountain chains like the Dents due Midi, the Dents Blanches de Champerers or the Alps of Vaud and the deep Rhone valley can be seen from the verandas on all sides of the chalet l'Hermitage. Ample parking is available in the front of the main door in the private driveway.

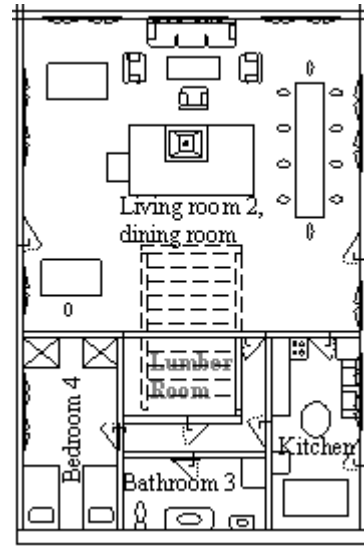
Since the Chalets l'Hermitage, la Bergerie and la Chaumière are close by, all three units can be rented jointly to accommodate larger groups.



Partial view of the living room on the first floor



Map of the first floor



Map of the ground floor

Useful Information

Amount of visitors allowed:

	Chalet la Chaumière Ground Floor	Chalet la Chaumière 1 st Floor	Chalet la Bergerie	Chalet l'Hermitage
Amount of guest allowed children included	6 persons	6 persons	8 persons	8 persons
Additional paying guest allowed	Yes, 1 person	No	Yes, 1 person	Yes, 1 person

Parking space available:

Chalet la Chaumière ground floor	Chalet la Chaumière 1 st floor	Chalet la Bergerie	Chalet l'Hermitage
2 cars outdoor	2 cars outdoor	Many cars outdoor, 1 carport	Many cars outdoor, 1 carport

Sizes of beds:

	90/190	140/190	160/190	180/200	200/200
Chalet la Chaumière ground floor		1	2		
Chalet la Chaumière 1 st floor			3		
Chalet la Bergerie			3	1	1
Chalet l'Hermitage	2		2	1	

Children cots are available in every house on request.

Size of duvets:

	160/210	200/210	220/220	240/240
Chalet la Chaumière ground floor				3
Chalet la Chaumière 1 st floor				3
Chalet la Bergerie			5	
Chalet l'Hermitage	2	3		

Equipment of the chalets:

Available equipment	Chalet la Chaumière ground floor	Chalet la Chaumière 1st floor	Chalet la Bergerie	Chalet l'Hermitage
Bath/shower rooms, toilets	2	2	3	3
Washing machine	Yes	Yes	Yes	Yes
Tumble dryer	Yes	Yes	Yes	Yes
Dish washer	Yes	Yes	Yes	Yes
Electric stove	4 plates	4 plates	4 plates	4 plates
Wood stove	Yes			
Electric oven	Yes	Yes	Yes	Yes
Microwave oven	Yes	Yes	Yes	Yes
Fridge	Yes	Yes	Yes	Yes
Filter coffee machine	Yes	Yes	Yes	Yes
Fondue/ Raclette Set	Yes	Yes	Yes	Yes
Mixer	Yes	Yes	Yes	Yes
Electric juicer	Yes	Yes	Yes	Yes
Toaster	Yes	Yes	Yes	Yes
High Chair	Yes	Yes		Yes
Ironing equipment	Yes	Yes	Yes	Yes
Fuel central heating	Yes	Yes	Yes	Yes
Sauna	5 Persons		From 2011	3 Persons

Due to restrictions by the local electricity provider, the power supply of the sauna is cut between 11h00 and 12h00 as well as between 18h00 and 19h30

Carnotzet (party room)	Yes			Yes
Open or closed fire place	1	1	2	2
Wood heater	2	2		
Open terrace	Yes	Yes	Yes	Yes
Covered terrace/balcony	Yes	Yes	Yes	Yes
Table, chairs and sun-loungers on the terrace	Yes	Yes	Yes	Yes
Barbecue	Fixed + covered	Fixed + covered	Fixed + covered	Fixed + covered
Telephone (CH 0041)	024/4776285	024/4776284	024/4776200	024/4776283
Computer with MS Office	Yes	Yes	Yes	Yes
Internet connection	WLAN/ADSL	WLAN/ADSL	WLAN/UMTS	WLAN/UMTS
Mobile phone reception	Yes	Yes	Yes	Yes
Books/games	Yes	Yes	Yes	Yes
Billiard table	Pool	Snooker	Pool	Pool
Table-football			Yes	Yes
Hi-Fi rack with CD player	Yes	Yes	Yes	Yes
Digital satellite television	Astra + Hotbird	Astra + Hotbird	Astra + Hotbird	Astra + Hotbird
Video	Yes	Yes	Yes	Yes
DVD	Yes	Yes	Yes	Yes

The area



View from the terraces of the chalets on the Dents du Midi at sunset

Troistorrents is a little village in the peaceful valley known as Val d'Illeiez, one of the first valleys beyond Lake Geneva, easily reachable within a 20 minute drive.

All mountain and water sports are close by and there are many choices for winter and summer activities. Well signposted hiking trails pass just behind the houses. Many overnight lodges are available on the hiking routes. Regular hikers know that the most colourful and quietest period in the mountains is autumn.

The main winter attraction is of course downhill and cross country skiing which are renowned in this area. From the house you can reach four major ski resorts within a 15 minute drive. These are part of the Portes du Soleil, the largest linked ski area in the world. You can even ski off piste back to the house, weather permitting. Villars, Verbier and its glacier, Gstaad, Crans-Montana etc. are within reach for an alternative day's skiing.

The area also offers cultural highlights in many towns like Montreux, Martigny, Lausanne and Geneva. Thermal baths are available in several nearby places.

Distances from the chalets:

The nearest ski resort (Morgins)	7 min (6 km)
Thermal baths (Val d'Illicz)	5 min (4 km)
Bakery/grocery store/next village/next restaurants (Troistorrents)	5 min (4 km)
Doctor/pharmacy/post office/police (Troistorrents)	5 min (4 km)
Rural mountain railway stop (Troistorrents)	5 min (4 km)
Large supermarket in Switzerland (Monthey)	15 min (10 km)
Large supermarket in France (La Chapelle)	15 min (10 km)
Discotheque (Morgins)	7 min (6 km)
French Border	7 min (7 km)
Lake of Geneva (boats, sailing, water skiing, aqua park...) (Bouveret)	20 min (20 km)
Golf (Aigle/Montreux)	15 min (15 km)
The next hiking track	0 min (0 km)
Swimming pool/tennis/bungee-jumping/skating ring (Champéry)	10 min (8 km)
Next local airport (grass strip in Bex)	15 min (15 km)
Highway	15 min (12 km)
Montreux/Martigny	25 min (20 km)
Geneva	1 h 30 min (100 km)

Sports you can do in the area (this list is not exhaustive):

Sports	Season	Hyperlinks for more information
Downhill Skiing, Snowboarding, Squale (Morgins)	December-April	http://www.myswitzerland.com
Cross Country Skiing (Morgins, ...)	December-April	http://www.matterhornstate.com
Touring Ski (All over the area, from the house)	November-May	http://www.mychablais.ch
Ice Skating (Champéry)	All year	http://www.portesdusoleil.com
Snow-Shoe hiking (All over the area, from the house)	November-May	http://www.morgins.ch
Hiking (All over the area, from the house, Dents du Midi)	April-November	http://www.valdilliez.ch
Mountain Climbing (Barme, Plaine Dranse, St. Triphon, Cornettes de Bise)	All Year (also indoors)	http://www.champéry.ch
Swimming (Champéry,)	All Year	http://www.bouveret.ch
Thermal Baths (Val d'Illicz, Lavey)	All Year	

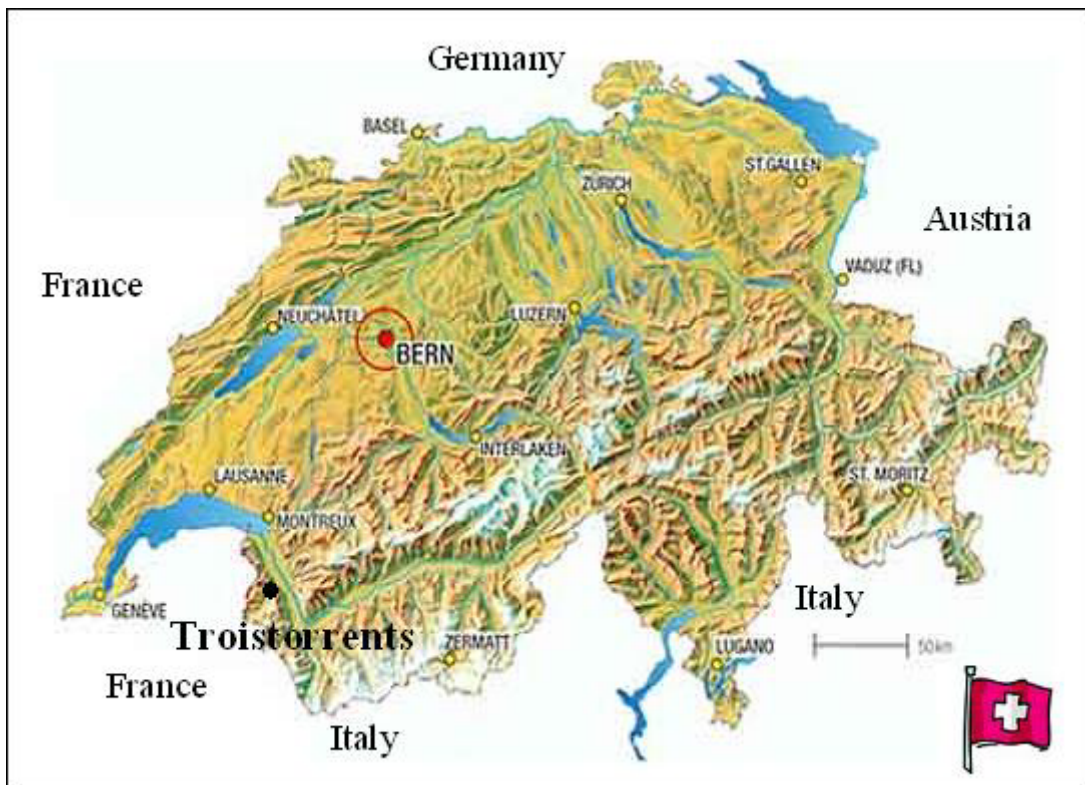
Horse Riding (Morgins, ...)	All Year	
Cycling	All Year	
Mountain Bike (All over the area, from the house)	April-November	
Sailing (Bouveret, ...)	All Year	http://www.chablais-grimpe.com
Windsurfing (Bouveret, Vernayaz)	May-October	http://www.cmc-aigle.ch
Water Skiing (Bouveret)	June-October	
Diving (Lake of Geneva)	All Year	http://www.gouille.ch ,
Roller Blades (Lowland, 32 Km along the river Rhone)	March-November	http://www.montreuxgolf.com
Tennis (Morgins, ...)	All Year (also indoors)	http://www.golf-villars.ch
Parasailing, Hang Gliding (Champoussin, ...)	All Year	
Golf (Aigle, ...)	All Year	
Cannoning	June-August	
Caving	All Year	

Leisure Centres, Exhibitions, Festivals and other Attractions nearby (this list is not exhaustive):

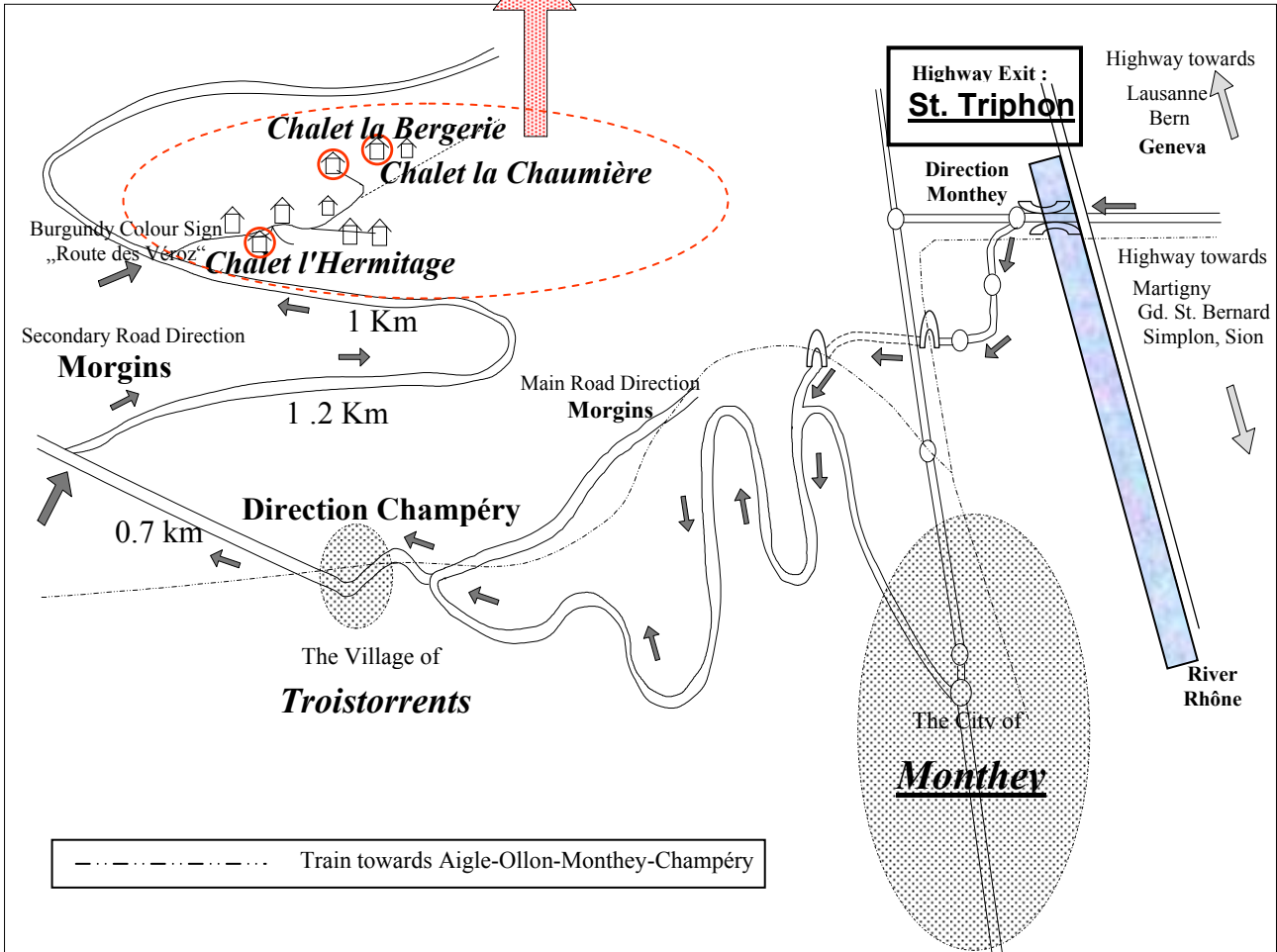
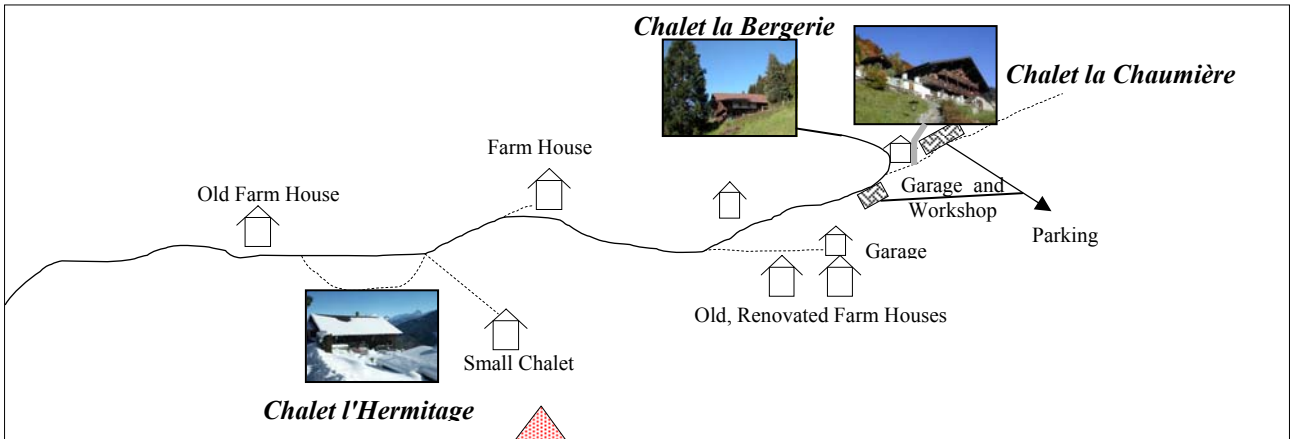
Leisure centres and other attractions	Activities	Hyperlinks for more information
Thermal Baths (Val d'Illiez, Lavey)	Inside and outside pools (in Lavey also sauna, jacuzzi, hammam, massages)	http://www.lavey-les-bains.ch http://www.thermes-parc.com
Aquaparc (Bouveret)	Pools, slides, 30° celsius, fun	http://www.aquaparc.ch
Swiss Vapeur Parc (Bouveret)	Large miniature train system. Great for children	http://www.swissvapeur.ch
Labyrinthe Aventure (Evionnaz)	The largest labyrinth of Switzerland, fun and education	http://www.labyrinthes.ch
Salt Mines (Bex)	Visit of hundreds of years old salt mines, fun for children and interesting for adults	http://www.mines.ch
Fun Planet (Villeneuve)	Go-kart circuits, discotheque, billiard room, games room ...	http://www.funplanet.ch
Underground Lake (St. Léonard)	A great boat ride on Europe's largest underground lake	http://www.lac-souterrain.com
Gorges du Trient (Vernayaz)	A walk in spectacular gorges	http://www.vernayaz.ch/tourisme
Grotte aux Fées (St. Maurice)	Spectacular cave	http://www.grotteauxfees.ch
Trésor de l'Abbaye de St. Maurice (St. Maurice)	A treasure dating back to Roman times	http://www.saint-maurice.ch

Fondation Giannada (Martigny) Fondation l'Hermitage (Lausanne)	Great art exhibitions all year round	http://www.gianadda.ch http://www.fondation-hermitage.ch
Casino of Montreux Casino of Evian	Famous gambling Casinos	http://www.casinodemontreux.ch http://www.casino-evian.com
Montreux Jazz Festival (Montreux)	The legendary jazz festival takes place in July	http://www.montreuxjazz.com
Festival Tibor Varga (Sion) Festival de musique classique Montreux-Vevey	Unique festivals of classical and lyrical music. Summer and fall	http://www.concours-violon.ch http://www.septmus.ch

How to find us?



If you arrive from Geneva drive in the direction of Lausanne, Gd St. Bernard, Simplon. If you arrive from Zurich or Basle follow the direction Vevey, Lausanne, Geneva. South of Bern the motorway splits in two parts at the "Weyermannhausdreieck" crossing. Follow the direction Fribourg, Vevey, Gd. St. Bernard. The highways coming from Geneva and from Basle/Zurich join near Vevey. Continue direction Martigny, Gd. St Bernard, Brig, Simplon. Take the 5th exit St. Triphon. The previous 4 exits are Vevey, Montreux, Villeneuve and Aigle. Continue then direction Monthey, Champéry. Once you arrive in Monthey please call the number 0041/79/2134959 to inform of your pending arrival and ensure a smooth hand over of the keys. A couple of kilometres after leaving Monthey you will reach a cross road leading either towards Champéry or towards Morgins. Turn left towards Champéry and drive through the town of Troistorrents. 700 meters after the railroad crossing at the end of the village, turn right into a secondary road leading to Morgins. Proceed on that road for 1.25 km, where the road makes a hair-pin bend and continue for a further kilometre. You will find to your right a narrow paved road. A modest burgundy colour sign indicating "Route des Véroz" is standing aside the junction. Turn right into this lane. The Chalet L'Hermitage entrance is the first driveway on the right. The Chalet la Chaumière is 450 meters further up the lane just where the unpaved part of the road begins. It is above a hair-pin turn driveway and can be seen left above and beyond a garage. After the turn the lane ends in front of the Chalet la Bergerie.



Contact us

Ways to get in touch:

Postal address	Electronic Mail	Telephone/fax
Chalets-in-Switzerland La Chaumière - CP 63 CH - 1872 Troistorrents Switzerland	Please click on the e-mail address to send a mail <u>info@chalets-in-switzerland.com</u>	Telephone ++41/24/4776286 Fax ++41/24/4776201 Mobile ++41/79/2134959

Banking contact:

Address of the Bank	Swift Code	Account Owner and Number	IBAN Number
Bank Raiffeisen of Trois- torrents Postbox 49 CH-1872 Troistorrents troistorrents@raiffeisen.ch	RAIFCH22	Account number : 2573.94 Account Owner : Chalets-in-Switzerland, Patrick Lenz	CH18 8062 6000 0002 5739 4

For information about the **availabilities of the houses** or other questions, please send a mail to the Internet address **info@chalets-in-switzerland.com** or ring 0041/79/2134959.

Rental conditions

Payment:

If the booking occurs more than six weeks in advance, a non-refundable deposit of 25% of the rent is required. The balance is due six weeks before the date of arrival.

If the booking occurs within six weeks of arrival, then the full amount is required at the time of booking.

The booking becomes effective the moment the money is credited to following bank account:

Address of the bank : Bank Raiffeisen, Post-box 49, 1872 Troistorrents, Switzerland

Swift Number : RAIFCH22

Bank Account Number in Swiss Francs: 2573.94

Bank Account Number in Euros : 2573.26

Account Owner : Chalets in Switzerland - Patrick Lenz

International Bank Account Number (IBAN) for Transfers in Swiss Francs: CH18 8062 6000 0002 5739 4

International Bank Account Number (IBAN) for Transfers in Euros: CH11 8062 6000 0002 5732 6

Email : troistorrents@raiffeisen.ch

Checks are also accepted as an alternative means of payment. However, a surcharge of CHF 15.- per check will be charged.

Permanent last minute offer : For late bookings taking place less than 1 week before arrival a discount of 50% on the lease will be given.

This offer doesn't apply on journeys lasting less than a week, for example on a weekend stay. In case of last minute or partial week bookings the actual costs for fuel, electricity and cleaning will replace the weekly maintenance charge.

Deposit:

A deposit against loss, breakage or damage of CHF 1'500.- for the chalets l'Hermitage and la Bergerie, of CHF 1,000.- for each of the two apartments of the chalet la Chaumière is due on arrival. **It may only be left in cash in any western**

currency. The deposit is fully refundable after the inventory has been checked and been found to be in order.

Any extra-cost charges can be deducted from the deposit or can be paid in cash separately.

Other Conditions:

The arrival time is between 5 and 6 PM, the departure time at 9 AM.

To allow a smooth hand over of the keys, the customer should call the following number on his arrival in the town of Monthey : 0041/79/2134959.

The chalets l'Hermitage and la Bergerie are designed for **8 guests**, a paying extra person is accepted. The apartments on the ground floor and on the first floor of the chalet la Chaumière can host **6 visitors**. In the ground floor apartment a paying extra person is accepted. **Children, who can walk, are considered as adults.**

Due to the setup of its interior children or teens below 15 years of age are not allowed to the Chalet la Bergerie.

The owner has the right or to expel those visitors exceeding the quotas above or to rise the rent proportionally to the total amount of guests.

Smoking inside the houses is not permitted. No animals are allowed.

Snow clearing is done by the commune on all roads approaching the house but clearing within the house boundary is up to the renter during the stay.

Renters are expected to leave the house in a reasonably clean and tidy condition to avoid a charge being made against the deposit.

Please allow access to the garden for maintenance when required.

The renter must inform the owner immediately regarding any unusual or abnormal occurrences. He further has, within the bounds of what is reasonable, to take immediate action to minimize or avoid further damage.

To avoid claims at the end of his journey the renter has to inform the owner immediately if he finds some of the equipment of the house damaged, out of order or broken by previous parties.

The place of jurisdiction is Monthey.

The Basic Final Cleaning

In principle: **The renters are responsible for the basic final cleaning and the owner for the cleaning in to depth**

In details:

- The renters have to **evacuate their garbage** themselves. Glass should be split off and thrown away into a special container.
- The **floors** of the flat/chalet should be left broom-clean. Sticky stains on floors, tables or working surfaces have to be removed.
- The **bathrooms** especially the toilets should be left hygienically acceptable.
- The **fire places and the windows of the fire places** should be cleaned by the renters. A special cleaner to suck out the ashes is available in the lumber room.
- The **dishes** have to be washed and stored.
- The **oven and the hotplates** should be cleaned by the renters. Cleaning equipment is under the sink or in the lumber room.
- The **cooking pots and pans** should be cleaned by the renters. Cleaning by dish washer only is **not sufficient**.
- The **Carnotzet and the raclette machine** should be cleaned by the renters.
- The **furniture, the decorative items or the kitchen accessories** which have been moved have to be **taken back** to their original place.

The owner has the right to deduct the equivalent of his extra-costs from the deposit when one or more points are not fulfilled.

Rental Prices

Permanent last minute offer: For late bookings taking place less than 1 week before arrival a discount of 50% on the lease will be given. This offer doesn't apply on journeys lasting less than a week, for example on a week-end stay.

In case of last minute or partial week bookings the actual costs for fuel, electricity and cleaning will replace the weekly maintenance charge.

Additional Charges:

Maintenance charges	CHF 25.- (€ 17.-) per person per week
Bed linen and towels	CHF 25.- (€ 17.-) per person
Government-tax	CHF 1.- (€ 0,7) per adult per day CHF 0,5 (€ 0,35) per child per day
Fire wood	CHF 10.- (€ 7.-) a box
Extra person	CHF 200.- (€ 138.-) per person and week
Sauna	CHF 10.- (€ 7.-) per session
Telephone and Dial Up Internet	Charged at CHF 0.2 (€ 0,14) per unit
WLAN Internet by ADSL (available in the Chalet la Chaumière only)	CHF 25.- per week including repeater and WLAN Stick
WLAN Internet by UMTS (available in the Chalets la Bergerie and l'Hermitage only)	CHF 40.-. This sum includes the lease of a 3G modem, a WLAN router and a pre pay card with a credit of CHF 20.-. The provider charges CHF 4.- per day. The data volume is limited at 2,5 GB per week.
NB children, who can walk, are considered as adults	

2010

Price List for 2010 in Swiss Francs:

Price in Swiss Francs (CHF) per week	Chalet la Chaumière ground floor	Chalet la Chaumière 1st floor	Chalet la Bergerie	Chalet l'Hermitage
Summer time				
Peak (SP)	1'375.-	1'195.-	1'925.-	1'925.-
Normal (SN)	1'175.-	995.-	1'525.-	1'525.-
Low (SL)	975.-	795.-	1'100.-	1'225.-
Winter time				
Peak (WP)	2'375.-	2'095.-	3'525.-	3'525.-
High (WH)	1'975.-	1'500.-	3'025.-	3'025.-
Normal (WN)	1'150.-	1'000.-	2'425.-	2'425.-
Low (WL)	1'000.-	900.-	1'500.-	1'675.-
Renting on a weekend or on a day to day basis is also possible. The price per day is a seventh of the price for the week.				
Cash settlements can be made in Swiss Francs or any western currencies. The Euro is currently accepted at an exchange rate of 1,3 (1 Euro = 1,3 CHF).				

Weekly Plan for 2010:

12.12-19.12.09	WL	13.03-20.03.10	WN	12.06-19.06.10	SN	11.09-18.09.10	SN
19.12-26.12.09	WP	20.03-27.03.10	WN	19.06-26.06.10	SN	18.09-25.09.10	SN
26.12.09-02.01.10	WP	27.03-03.04.10	WN	26.06-03.07.10	SP	25.09-02.10.10	SN
02.01-09.01.10	WH	03.04-10.04.10	WN	03.07-10.07.10	SP	02.10-09.10.10	SN
09.01-16.01.10	WN	10.04-17.04.10	WN	10.07-17.07.10	SP	09.10-16.10.10	SN
16.01-23.01.10	WN	17.04-24.04.10	WN	17.07-24.07.10	SP	16.10-23.10.10	SN
23.01-30.01.10	WH	24.04-01.05.10	WL	24.07-31.07.10	SP	23.10-30.10.10	SN
30.01-06.02.10	WH	01.05-08.05.10	SN	31.07-07.08.10	SP	30.10-06.11.10	SN
06.02-13.02.10	WP	08.05-15.05.10	SN	07.08-14.08.10	SP	06.11-13.11.10	SL
13.02-20.02.10	WP	15.05-22.05.10	SN	14.08-21.08.10	SP	13.11-20.11.10	WL
20.02-27.02.10	WP	22.05-29.05.10	SN	21.08-28.08.10	SP	20.11-27.11.10	WL
27.02-06.03.10	WH	29.05-05.06.10	SN	28.08-04.09.10	SP	27.11-04.12.10	WL
06.03-13.03.10	WH	05.06-12.06.10	SN	04.09-11.09.10	SN	04.12-11.12.10	WL

2011

Price List for 2011 in Swiss Francs:

Price in Swiss Francs (CHF) per week	Chalet la Chaumière ground floor	Chalet la Chaumière 1st floor	Chalet la Bergerie	Chalet l'Hermitage
Summer time				
Peak (SP)	1'375.-	1'195.-	1'925.-	1'925.-
Normal (SN)	1'175.-	995.-	1'525.-	1'525.-
Winter time				
Peak (WP)	2'375.-	2'095.-	3'525.-	3'525.-
High (WH)	1'950.-	1'500.-	3'025.-	3'025.-
Normal (WN)	1'250.-	1'100.-	2'425.-	2'425.-
Renting on a weekend or on a day to day basis is also possible. The price per day is a seventh of the price for the week.				
Cash settlements can be made in Swiss Francs or any western currencies. The Euro is currently accepted at an exchange rate of 1,3 (1 Euro = 1,3 CHF).				

Weekly Plan for 2011:

11.12-18.12.10	WN	19.03-26.03.11	WN	25.06-02.07.11	SP	01.10-08.10.11	SN
18.12-25.12.10	WH	26.03-02.04.11	WN	02.07-09.07.11	SP	08.10-15.10.11	SN
25.12.10-01.01.11	WP	02.04-09.04.11	WN	09.07-16.07.11	SP	15.10-22.10.11	SN
01.01-08.01.11	WH	09.04-16.04.11	WN	16.07-23.07.11	SP	22.10-29.10.11	SN
08.01-15.01.11	WN	16.04-23.04.11	SN	23.07-30.07.11	SP	29.10-05.11.11	SN
15.01-22.01.11	WN	23.04-30.04.11	SN	30.07-06.08.11	SP	05.11-12.11.11	WN
22.01-29.01.11	WN	30.04-07.05.11	SN	06.08-13.08.11	SP	12.11-19.11.11	WN
29.01-05.02.11	WH	07.05-14.05.11	SN	13.08-20.08.11	SP	19.11-26.11.11	WN
05.02-12.02.11	WH	14.05-21.05.11	SN	20.08-27.08.11	SP	26.11-03.12.11	WN
12.02-19.02.11	WP	21.05-28.05.11	SN	27.08-03.09.11	SP	03.12-10.12.11	WN
19.02-26.02.11	WP	28.05-04.06.11	SN	03.09-10.09.11	SN	10.12-17.12.11	WN
26.02-05.03.11	WP	04.06-11.06.11	SN	10.09-17.09.11	SN		
05.03-12.03.11	WP	11.06-18.06.11	SN	17.09-24.09.11	SN		
12.03-19.03.11	WN	18.06-25.06.11	SN	24.09-01.10.11	SN		

Nearby Hiking Tours

Tour 1:

Departure: from the Chalets

Map: 1304 Val d'Illiez of the Swiss Office for Topography

Waypoints: the Chalets, Crie d'en Bas, Val-d'Illiez, Bains de Val-d'Illiez, Stade de Foot, Chiesey, the Chalets

Effort: approx. 400 vertical meters, distance approx. 5 km, scheduled time approx. 2 1/2 hours

Specificity: very wild area crossing the torrent below Crie d'en Bas

Level of Difficulty: easy tour, ideal for acclimatizing

Tour 2:

Departure: from the Chalets

Map: 1304 Val d'Illiez of the Swiss Office for Topography

Waypoints: the Chalets, les Prés, les Saves, le Jorat, Séchau, Délifrête, Forêt des Mérennes, Lavy, Crie d'en Bas, the Chalets

Effort: approx. 450 vertical meters, distance approx. 8 km, scheduled time approx. 3 1/2 hours

Specificity: very pretty swamp area between Jorat and Délifrête

Level of Difficulty: easy tour, ideal for acclimatizing

Tour 3:

Departure: from the Chalets

Map: 1304 Val d'Illiez of the Swiss Office for Topography

Waypoints: the Chalets, les Prés, les Saves, Bossat, Savolaire, Plan des Mériaux, Morgins, La Cergnat, le Bois, the Chalets

Effort: approx. 600 vertical meters, distance approx. 8 km, scheduled time approx. 4 hours

Specificity: Savolaire is a particularly beautiful high pasture. A longer stop right on the top nearby a little sanctuary is an absolute must.

Level of Difficulty: easy tour, ideal for acclimatizing

Tour 4:

Departure: from the Chalets

Map: 1304 Val d'Illiez of the Swiss Office for Topography

Waypoints: the Chalets, les Prés, le Bois, Pont du Rière, Pia de Sex, Champérene, Chanso, Pointe de Bellevue, Culet, Forêt des Ecottis, le Sépa, Morgins, la Cergnat, le Bois, les Prés, the Chalets

Effort: approx. 1000 vertical meters, distance approx. 12 km, scheduled time approx. 6 1/2 hours

Specificity: breathe taking views from the Pointe de Bellevue

Level of Difficulty: slightly more engaged tour, requires good physical fitness

Tour 5:

Departure: from Champéry, below the garage at the end of Champéry

Map: 1304 Val d'Illiez of the Swiss Office for Topography

Waypoints: Champéry, Galerie Défago, les Rives, les Planchamps, Champéry

Effort: approx. 200 vertical meters, distance approx. 2,5 km, scheduled time approx. 1 1/4 hours

Specificity: the Galerie Défago is a path partially excavated into the vertical rock

Level of Difficulty: easy walking accessible to all ages and levels of physical fitness

Tour 6:

Departure: from Champéry, Grand Paradis

Map: 1304 Val d'Illiez of the Swiss Office for Topography

Waypoints : Grand Paradis (Champéry), Forêt de la Lui, Roc Coupés, Rossétan, Bonnavau, Signal de Bonnavau, Sous la Dent, Barne, Grand Paradis

Effort: approx. 500 vertical meters, distance approx. 8 km, scheduled time approx. 3 hours 40 minutes

Specificity: a beautiful and physically not very demanding tour

Level of Difficulty: medium

Tour 7:

Departure: from Champéry, Grand Paradis

Map: 1304 Val d'Illiez of the Swiss Office for Topography

Waypoints : Grand Paradis, Forêt de la Lui, Roc Coupés, Rossétan, Metecou, Lacs d'Antème, Tinderray, Sex Bornay, below Signal de Soi, below Dent de Valère, Valerette, Chindonne

Effort: approx. 1250 vertical meters, distance approx. 18 km, scheduled time approx. 7 hours 40 minutes

Specificity: beautiful tour through an amazing countryside. The points of departure and arrival are quite distant which makes the planning a little more complicated

Add on: a little further up from Signal the Soi is a very beautiful mountain lake, the lac de Soi.

Suggestion: some parts of this big hike can be worked out in more modest, independent tours (Lacs d'Antème, Signal de Soi, Lac de Soi, Dent de Valère, Dent de Valerette)

Level of Difficulty: tiring and long but very beautiful hike

Tour 8:

Departure: la Chappelle d'Abondance, Chalets de Cheyenne's, France

Map: 1284 Monthey of the Swiss Office for Topography

Waypoints: Chalets de Cheyenne's, Chalets de la Château, east of Pas de la Bosse, summit of Cornettes de Bise, Sex de la Calle, Col de Verne, Chalets Toper, Chalets de Chevennes

Alternative Route: from the summit descend a valley further north towards the Lake of Taney

Effort: approx. 1150 vertical meters, distance approx. 5 km, scheduled time approx. 5 hours 10 minutes

Specificity: breathtaking views from the summit on the lake of Geneva, the French and the Swiss Prealps, the Mont Blanc massif and the high Alps of Bern and Valais. You will further see herds of half tame mountain goats.

Level of Difficulty: difficult tour

Tour 9:

Departure: Fontaine (on the way between Vacheresse und chalets de Bise), France

Map: 3528 ET Top 25 IGN (French National Institute for Geography)

Route: Fontaine, le Bouaz, Darbon, Col de la Case d'Oche, Lac de la Case, Chalets d'Oche, Col de Rebollion, summit of Dent d'Oche , Lac de la Case, les Portes d'Oche, Lac de Darbon, col de Floray, just below the summit of Pointe de Bénévent, le Bouaz, Fontaine

Effort: approx. 1700 vertical meters, distance approx. 9 km, scheduled time approx. 8 hours

Specificity: hike containing a great variety of country sides, passes and lakes. The summit of the Dent d'Oche offers great views. Many wild animals can be seen all along the way, especially mountain goats

Level of Difficulty: difficult but very rewarding tour

Tour 10:

Departure: Châtel, Linga, shortly before the col de Bassachaux, France

Map: 3528 ET Top 25 IGN (French National Institute for Geography)

Waypoints: shortly before the Col de Bassachaux, les Grand Plans, Chalets de Lens, Refuge des Linderets, Chalets d'Ardens, Ardens, Lac de Tavaneuse, Col de Tavaneuse, Chalets de Lens, Lac de Montrion, le Choseau, la Barme, les Roulainnes, Col de Bassachaux

Effort: approx. 1500 vertical meters, distance approx. 14 km, scheduled time approx. 8 1/2 hours

Specificity: tour with a great variety of beautiful country sides. The tour is mainly taking place in the midst of erosion shaped Sandstone Mountains

Level of Difficulty: difficult but very rewarding tour